

BSUR

British Society of Urogenital Radiology

Workshops & Annual Scientific Meeting

15th, 16th & 17th May 2024

The Halle, St Peter's, Manchester



Further Information can be found here
<https://www.bsur.org.uk/>

We would like to welcome and thank all
our sponsors!



fittleworth

deephealth

Boston
Scientific

Advancing science for life™



macromed

Canon

CANON MEDICAL



Lucida Medical



ARGON

MEDICAL DEVICES



Quibim

Guerbet



Overview: The day will include short lectures on “hot topics” around prostate MRI role and interpretation, with an emphasis on delegates engaging in practical ‘hands-on’ case reviews. This session will take place in the main hall.

Target audience: Senior SpRs and Consultant radiologists with at least introductory-to-intermediate level experience in prostate MRI.

Faculty: Tristan Barrett (Cambridge), Iztok Caglic (Cambridge), Alex Kirkham (UCL), Amit Patel (Lister), Luca Russo (London)

The RCR have awarded 6 CPD points for the workshop

<i>0845 – 0900</i>	<i>Welcome and Introduction</i>
0900 – 0920	Lecture 1: Prostate MRI Interpretation
0920 – 0930	Technical Overview of Viewing Software
0930 – 1030	Workshop Session 1
1015 – 1035	Lecture 2: MR Prostate
<i>1035 – 1055</i>	<i>Tea/Coffee Break</i>
1055 – 1115	Lecture 3: Pitfalls in Prostate MRI
1115 – 1215	Workshop Session 2
<i>1215 – 1315</i>	<i>Lunch</i>
1315 – 1335	Lecture 4: AI Concepts in the Prostate Diagnostic Pathway
1335 – 1435	Workshop Session 3
<i>1435 – 1500</i>	<i>Tea/Coffee Break</i>
1500 – 1520	Lecture 5: The Post-Treatment Gland
1520 – 1620	Workshop Session 4
<i>1620 – 1630</i>	<i>Final Questions and Close</i>

Overview: The day will include short lectures on “hot topics” around gynaecological cancer, with an emphasis on delegates engaging in practical ‘hands-on’ case reviews. This session will take place in Victoria Wood Hall.

Target audience: Senior SpRs and Consultant radiologists with at least introductory-to-intermediate level experience in gynae MRI.

Faculty: Faye Cuthbert (Sussex), Nishat Bharwani (London), Beth Hankinson (Liverpool), Sarah Keegan (Liverpool), Nada Bashar (Liverpool), Helen Oliver (Bath), Joe Mercer (Manchester)

The RCR have awarded 6 CPD points for the workshop

<i>0845 – 0900</i>		<i>Welcome and Introduction</i>
0900 – 0910	Technical Overview Software	
0910 – 0930	Lecture 1: Endometrial Cancer	
0930 – 1015	Workshop Session 1	
1015 – 1035	Lecture 2: Cervical Cancer	
<i>1035 – 1105</i>		<i>Tea/Coffee Break</i>
1105 - 1155	Workshop Session 2	
1155 – 1215	Lecture 3: Post Chemo/Radiotherapy Cervix/Recurrence	
<i>1215 – 1315</i>		<i>Lunch</i>
1315 – 1400	Workshop Session 3	
1400 - 1420	Lecture 4: Working with ORADS clinically	
1420 – 1505	Workshop Session 4	
<i>1505 - 1520</i>		<i>Tea/Coffee Break</i>
1520 – 1620	Lecture 5: Weird and Wonderful Gynae Cases – an hour of head scratchers	
1620 - 1630	Final Questions and Close	

0815 - 0845

Registration and Refreshments

0845 - 0900

Welcome

Introduction and welcome to Manchester and BSUR 2024

*Faye Cuthbert, President BSUR;
Maryna Brochwicz-Lewinski, chair of organising committee*

0900 - 1030

Plenary Session 1
Retroperitoneum – an uncomfortable compartment for urogenital radiologists – Main Hall
Chairs: Shrilay Sinha and Becki Wiles

Extravisceral lesions of the retroperitoneum – Rachel Hyland, Leeds

Nuclear medicine in the retroperitoneum – where/when, Tom Westwood, Manchester

AI in the retroperitoneum – Amani Arthur, London

Complex surgery in the retroperitoneum – Aziz Gulamhusein, Manchester

1030 – 1100

Refreshments, poster presentations and industry sponsors

1100 - 1200

Parallel 1 : Gynaecology
Ovarian Cancer Update – Victoria Wood Hall
Chairs: Helen Oliver and Dina Kasir

O-Rads for ovarian cancer – Faye Cuthbert, Brighton & Nish Bharwani, London

Peritoneal disease, PCI assessment and HIPEC – Andrew Thrower, Basingstoke

Variation in ovarian cancer management in the UK – Richard Edmondson, Manchester

1100 - 1200

Parallel 1 : Urology
Next generation imaging in prostate cancer management – Main Hall
Chairs: Iztoc Caglic and Amit Patel

PET CT – Bhushan Seshadri, Liverpool

Wb-MRI – Nina Tunariu, London

How NGI has changed my urological practice – Alison Birtle, Preston

1200 – 1330

Lunch

Lunchtime symposium: National Nephrostomy Care Campaign (Launch) - Victoria Wood Hall

Fawad Shameem, Mid Yorkshire, Aarushi Gangahar, Emily Geddes, Michelle Lonsdale

Industrial Manchester at the turn of the 20th Century – guided walk from HSP: 1220 – 1320

(Prebooking on the day at registration, only 35 spaces, no charge – sturdy shoes and an umbrella!)

1330 - 1500

Plenary 2

AI for the technophobic radiologist – Main Hall
Chairs: Nishat Bharwani and Tristan Barrett

How is AI going to fit into the NHS and what do we need to know as radiologists? – Andrea Rockall, London

AI applications in CT – Richard Hawkins, Mid Cheshire

Advances in AI within gynaecological imaging – Luca Russo, London

Prostate cancer detection software: what to think about before you buy – Anwar Padhani, London

1500 – 1530

*Refreshments, **poster presentations** and industry sponsors*

1530 – 1630

Parallel 2: Gynaecology

Modern fibroid imaging and management – Victoria Wood Hall
Chairs: Lois MacDonald and Becki Wiles

Pesky bleeders - what the gynaecologist needs from imaging – Fusun Sirkeci, Manchester

Fibroid embolization focusing on case selection/imaging requirements and indication. Post treatment appearances and complications – Anantha-Krishnan Ganapathy, Manchester

Case presentations with MDT style discussion

1530 - 1630

Parallel 2: Urology

Has the Radiological ablation of small renal cell carcinoma reached equivalence with nephron sparing surgery? - Main Hall
Chairs: Jonathan Richenberg and Nishant Omair

Cryoablation – Alex King, Southampton

Robot assisted – laparoscopic partial nephrectomy – Hazel Warburton, Manchester

Case presentations with MDT style discussion, - Nishant Omar, Manchester

2024 Annual Meeting

Day 1 - 16th May

1630 - 1715	Quiz 'A Game of Stones' North versus South – Main Hall Quiz Masters: Rachel Hubbard, Sandeep Pahak
1715 - 1815	AGM
1730 - 1900	Drinks Reception – Café Cotton, Halle St Peters
1930	Conference Dinner – Halle St Peters

0715

Early Bird Fun Run
Meet outside Halle St Peters, approx. 5.5k canal run (Northern Quarter Canal Loop – Strava)

0815 - 0900

Registration and Refreshments

0900 - 1030

Plenary 3

Oncology beyond conventional treatment – Main Hall
Chairs: Jane Belfield and Balraj Dhesi

Imaging recurrent pelvic malignancy – Sean Tennant, Manchester

Surgical management of recurrence, how, why and when – Prof Omer Aziz, Manchester

Novel treatments and molecular advances in delivering personalised cancer care:
- Gynaecological malignancies – Rachel Cooper, Leeds
- Urological malignancies – YeePei Song, Manchester

Imaging and pitfalls in patients following new treatments – Ben Taylor, Manchester

1030 - 1100

Refreshments

1100 - 1200

Plenary 4

Registrar oral presentations – Main Hall
Chairs: Yousef Alwan and Harry Bardgett

Name	Abstract Title	Presenter
Rosie Conroy	Bosniak classification of renal cysts- should the 2019 classification be adopted for reporting and management?	Rosie Conroy
Taryn Cruickshank	Retrospective analysis of complications post ultrasound guided suprapubic catheter insertion at a large tertiary teaching hospital	Nicholas Lorch
Dr Anna Pick	Imaging Urogynaecological Mesh	Dr Anna Pick
Zaha Hamam	Evaluation of the uterine leiomyomas and how to differentiate atypical leiomyomas from leiomyosarcoma based on MRI imaging: A pictorial review	Zaha Hamam

1200 - 1300

Workshop 1 Hot topics in Gynae imaging 1

PCO - New European Guidelines – Ephie Yasmin, London

Heavy painful periods – Moji Balogun, Birmingham

1200 - 1300

Workshop 2 Hot topics in Gynae imaging 2

Placenta imaging, Faye Cuthbert, Brighton

Congenital Gynaecological Anomalies Imaging, Cara Williams, Liverpool

1200 - 1300

Workshop 3 High end PCNL – beyond the simple maxi for single stone

Mini v ultra mini

No safety wire for ultra mini

No retrograde catheter, direct stone puncture

Tubeless

Day case

1200 - 1300

Workshop 4 Penile imaging

Penile MR – Doug Pendse, London

Penile Trauma – Dean Huang, London

Imaging workup for erectile dysfunction and subfertility – Davide Prezzi, London

1300 - 1400

Lunch and networking with colleagues and sponsors

1400 - 1500

Workshops Continued

1400 - 1500

Workshop 1
Hot Topics in Gynae imaging 1

PCO - New European Guidelines – Ephia Yasmin, London

Heavy painful periods – Moji Balogun, Birmingham

1400 - 1500

Workshop 2
Hot Topics in Gynae imaging 2

Placenta imaging, Faye Cuthbert, Brighton

Congenital Gynaecological Anomalies Imaging, Cara Williams, Liverpool

1400 - 1500

Workshop 3
High end PCNL – beyond the simple maxi for single stone

Mini v ultra mini

No safety wire for ultra mini

No retrograde catheter, direct stone puncture

Tubeless

1400 - 1500

Workshop 4
Penile imaging

Penile MR, Doug Pendse, London

Penile Trauma, Dean Huang, London

Imaging workup for erectile dysfunction and subfertility, Davide Prezzi, London

1500 - 1600	Case of the Day Discussion Poster, Oral Presentations and Twitter Competition Winners
Case 1	William Weston
Case 2	Dina Kasir
Case 3	Haroon Motara
Case 4	Eleanor Ainsworth & Alexandra Hutchings
Case 5	Andrea Dasilva & Leila Kafaei
Case 6	Jonathan Richenberg
1600	<i>Refreshments and Departure</i>



Fittleworth is Hollister's dispenser of choice, offering a dedicated home delivery service for ostomy and continence products. Fittleworth provide supplies for more than 60k people across the UK and have been a trusted partner to the NHS for 40 years.



Quick medical supply deliveries

Delivering exactly what your patient needs, direct to their door.



Expert, discreet care

Providing discreet non-judgemental support with whatever challenge your patients face.



Comprehensive support resources

We are here, by your patient's side for as long as they need us.



Scan here to register your patients or simply call us on 0800 378 413



4.51 ★★★★★



Post:

Freepost, Fittleworth

Online:

fittleworth.com

Phone:

National: 0800 378 846 | Scotland: 0800 783 7148 | Nurse Line: 0800 378 413



Pi™

Prostate AI with expert level performance

Patient benefits

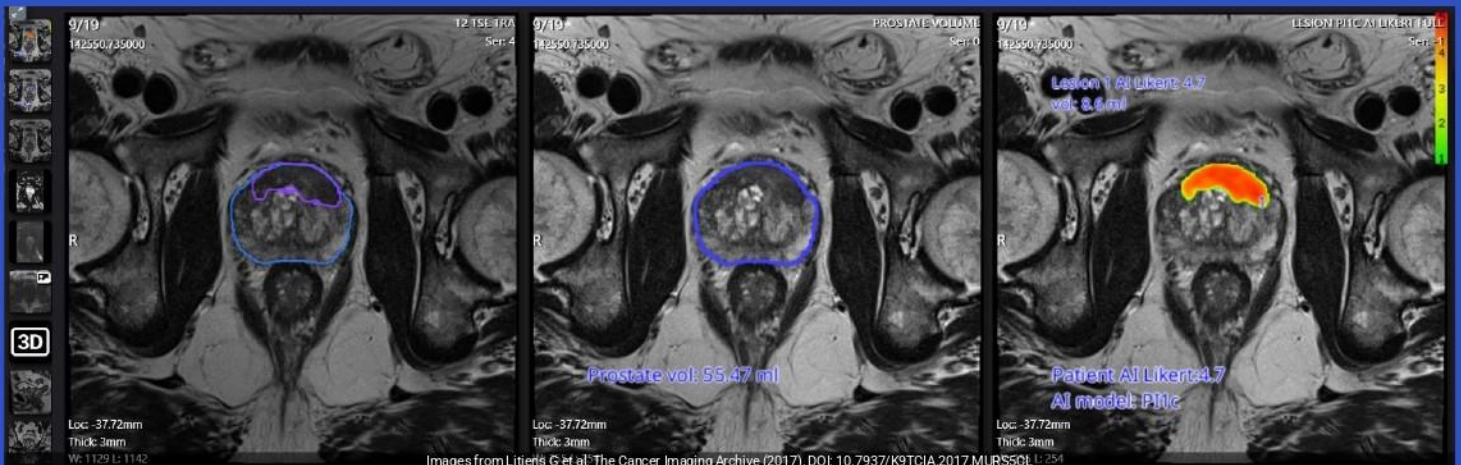
- Faster and better diagnosis
- Improved information to help increase cancer detection and reduce avoidable interventions
- Most appropriate treatment options

Clinical benefits

- Automatic volume calculation, lesion identification and risk score to assist communication and interpretation
- Helps all radiologists report at the level of experienced teams
- Export of prostate and lesion segmentations and scores for biopsy and treatment planning

Pathway benefits

- Reduce reporting bottlenecks
- Prioritise cases to cut waiting times
- Confidence in consistent, high quality and streamlined reporting and biopsy



Lucida Medical Ltd

Future Business Centre, King's Hedges Road
Cambridge, CB4 2HY United Kingdom

www.lucidamedical.com

contact-us@lucidamedical.com



Name	Abstract Title
Mohammed Abdulla	MR imaging of female cystic urethral and periurethral disorders
Alice Ashworth	Negative mpMR as a negative predictor for detection of future significant prostate cancer
Stephan Edey	Management of Rectal Endometriosis ,Äì Imaging findings and Treatment Approaches
Shiv Hadani	Audit on accuracy and complication rate when performing targeted percutaneous renal biopsies for suspected renal cancer in a District General Hospital
Anuja Joshi	The Role of Post-Operative Ultrasound in the First Living Donor Uterine Transplant in the United Kingdom
Miraen Kiandee	Omental biopsy technique and sample adequacy: single centre audit and literature review.
Angela Lam	Hepatic Portal Venous Gas and Pneumatosis Intestinalis in a patient with a neobladder managed non-surgically
Nicola Lee	Introduction of a HyCoSy service: our experience and results after one year
Dr Ji Hye Moon	A case of rare benign multicystic peritoneal mesothelioma in a patient presenting with an incarcerated paraumbilical hernia.
Anna Pick	MRI abdomen for Acute Pain in Pregnancy
Dr Priyanka Reddy	High Intensity Focused Ultrasound Ablation (HIFU) as a successful non-invasive intervention in the treatment of symptomatic fibroids and adenomyosis
Priyanka Reddy	A Pictorial Review of Imaging Features of Uterine Leiomyosarcomas
Peter Hanna Malky Senada	Are We Picking up Too Many Insignificant Cancers? an Audit of Our Management of PIRADS 3 Lesions.
Sobiya Sobiya	^{99m} Tc-sestamibi SPECT CT in the diagnosis of oncocytomas: A multitude of inconsistencies.

**Thank you for attending
the 2024 ASM Meeting!**

**We look forward to
seeing you again for
May 2025 ASM!**

BSUR Programme Committee

Maryna Brochwicz-Lewinski Manchester

Ben Taylor Manchester

Nishant Omair Manchester

Dina Kasir Manchester

Richard Hawkins Crewe

Lois MacDonald, Manchester

Faye Cuthbert Sussex

Nishat Bharwani London

Becki Wiles Liverpool

Iztok Caglic Cambridge

Sam Withey London

BSUR Committee

Past Chair	Amit Patel	Liverpool
Chair	Faye Cuthbert	Brighton
Vice chair	Tristan Barrett	Cambridge
Current meeting organiser	Maryna Brochwicz-Lewinski	Manchester
Secretary	Shrilay Sinha	Mid Yorkshire
Research and guidelines officer	Sam Withey	London
Education officer	Nishat Bharwani	London
BAUS Rep	Sandeep Pathak	
Past meeting organiser	Harry Bardgett	Bradford
Treasurer	Balraj Dhesi	Birmingham
Website and Communications officer (outgoing)	Atif Khan	Leeds
Website and Communications officer	Rachel Hubbard	Sheffield
Trainee rep uro	Samantha Patek	NHS Lanarkshire
Trainee rep gynae	Lizzie Parks	London
Co-opted member - Gynae	Becki wiles	Liverpool
Co-opted member - URO	Iztoc Caglic	Cambridge